

# HANHAM HALL COMMUNITY NEWSLETTER



December 2020—Issue 4

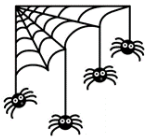
[hanhamhallnewsletter@gmail.com](mailto:hanhamhallnewsletter@gmail.com)

Welcome to the 4th issue of the revived Hanham Hall Newsletter, and a special welcome to any new residents in particular. If anyone, new or not-so-new, would like to get involved in community activities (currently Covid restricted), you can email the Residents' Group (but be patient as the inbox isn't checked daily) or contact the Newsletter direct. In this Issue we're including contact information which may be useful.

All previous issues of the Newsletter are now uploaded to the Hanham Hall website ([hanhamhall.uk](http://hanhamhall.uk)), with thanks to Helen Adams, and which Helen regularly updates. The website contains a great deal of useful information and is the product of a lot of hard work and time, given voluntarily by Lindsay Alford who created it a few years ago, and for which we continue to be very grateful. Thank you again Lindsay.

If anyone has any information you would like included in the Newsletter, any Hanham Hall stories, favourite recipes, local walks you enjoy, whatever..... please send them in to the Newsletter email address (see the info box).

## Spooky Balcony Competition - Results

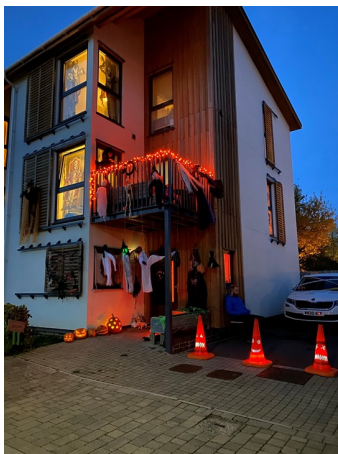


### THE WINNERS WERE

#### Joint 1st place



Beverley Phillips  
(SPOOKY PHILLIPS HOUSE)



Kelly Pollard  
(WITCH SPLAT)



**3rd Place**  
Soraya Babai  
(SKELETONS GRAVEYARD)



hanham hall  
Community Interest Company

## Hanham Hall Residents Group

Here we are back in the 2nd lockdown, and still unable to get together for community events, large or small. We're disappointed and sorry that we can't organise group events at the moment but have to comply with Government advice regarding groups and social distancing. However, having our wings clipped hasn't stopped people's creativity, and the Halloween Balcony Competition was just fabulous. Thank you everyone who had a go. A lot of work and effort and thought went into peoples' displays, the result being a lot of fun, and it was appreciated. Everyone deserved congratulations. Thank you for raising spirits!

Our next thoughts are of Christmas, and we've bought 26 sets of Christmas lights to decorate a number of trees on the development.

In December we're also running a window decorating competition to create 'stained glass' art effects, and by now everyone will have received a flyer about this. If you google 'Window Wanderland' you'll see what people have done in other parts of Bristol, and get inspired. It's a new idea for Hanham Hall - nice and Covid-friendly (is there is such a thing?).



We can't of course have our usual craft event and Father Christmas Grotto this year, with our wonderful hard-working elves from last year! But we've arranged with the North Pole for Father Christmas to visit Hanham Hall on Sunday December 6th between 1.00 and 3.00pm. He'll be delivering presents for the children to your front door - hopefully all requests have been sent in now. Snow's not expected so he can't use his sleigh, but he does have some unusual transport instead which hopefully will be fun for the children.



And looking ahead, a photography competition's been suggested for the new year, and we'll keep you posted on that as plans evolve. Any more ideas are always welcome, keep thinking them up please, socially distanced naturally!

Meanwhile, keep safe and well, and that old chestnut, be kind.

## Sovereign - New Housing Officer



**Jim Benson – Housing Officer**  
**A little bit about me...**

Hi all, my name is Jim Benson and I'm one of Sovereign's Housing Officers working in and around the Bristol area. I'm quite new to Bristol having originally hailed from Hampshire, however I've been working in housing, on and off, for over a decade now – during this time I've experienced working as both a Housing Officer and an Antisocial Behaviour Officer, and I much prefer the former if I'm honest. As a Housing Officer I feel that I am able to work closely with our residents and local communities to help achieve positive outcomes – and I very much enjoy being part of that process.

I spent my formative years in housing working in Basingstoke, Portsmouth, Southampton and Winchester, and I recently moved to Bristol after serving in the Royal Navy for the last 5 years. During my time in the RN I served as a Chef and as a Writer. While I served I was afforded the opportunity to visit some very interesting places including Gibraltar, Turkey, Muscat, Fujairah, Jordan, Bahrain and Dubai. I served on two of Her Majesty's finest warships, HMS DUNCAN and HMS DEFENDER, and I was privileged to serve with some extraordinary characters along the way.

Having left the RN I returned to life as a civilian and entered back into the world of social housing. The job can be challenging and stressful, yet very rewarding too. I'm passionate about working in social housing having grown up in social housing myself. I believe social housing plays a crucial role in our society. Providing homes in the midst of a housing crisis, building sustainable communities, and helping to support people so that they can live healthy and happy lives. I value what social housing has to offer our society and I am pleased to be a part of it.

Outside of work I enjoy watching football, running, and going for walks with my partner. I'm an ex-chef which means I now relish cooking again. I listen to music, watch far too many films, and I don't read nearly as much as I should. I think that about covers it, so at least I won't be a total stranger when you next see me about in the area. I look forward to meeting you all – All the best, Jim (**Housing Officer, Sovereign Housing**)

## Internet Providers

There are now many different internet providers that can be contracted to provide broadband services over the OFNL network at Hanham Hall.

Full details can be found on the OFNL website.

<https://www.ofnl.co.uk/residents-businesses/available-isps>

## Hanham Hall - Allotments

"It is a place we can escape our busy life. A place of true peace where people only discuss potatoes and sweet peas ... No Donald Trump. No Boris Johnson."

Imagine your own small plot of paradise that not only provides you with a physical workout but also fresh veg and fruit that you can pick and grow with the family throughout the year. You could plan it, plant it and eat it on your own or share with a neighbour. You will always find a fellow allotmenteer who can offer words of advice, share seeds or swap over surplus veg!

There are some spare allotments coming up at Hanham Hall, if you are interested contact [robyn@pinnaclepm.co.uk](mailto:robyn@pinnaclepm.co.uk)

## Naughty Corner

Those Bin Stores - A bone of contention, cause of frustration and annoyance, and regular creator of horrors. Please look on the individual wheelie bins to see what you can put in them, and if you aren't sure, check out what you can and can't recycle on the South Glocs website (<https://beta.southglos.gov.uk/environment-and-waste/waste-and-recycling/>). If you put the wrong stuff in your bins, you contaminate the load and it will be left behind to fester for all your neighbours to enjoy with you. Also if bags etc are spilling out of the top of your bin so that the lid won't shut, THE BIN WILL NOT BE EMPTIED as the contents will fall out when moved and you won't like the mess left behind.

The hard-working refuse collectors are not able to chuck your old sofa and bookcases on the back of their truck, and nor should we expect them to.

PLEASE be considerate to the 'bin men' and to your neighbours you share the bin store with. It isn't fair to think it's not your problem. You won't think that when your service charges increase because of having to pay contractors to remove your junk, and you won't be popular with your neighbours.

## Christmas Lights

It may not quite be Regent Street standard, but as agreed the Residents' Group have bought some new fairy lights to put in the trees again this festive season. The plan is to put them in the leafy bits of the trees rather than around the trunks as before, so they aren't so easily damaged. We hope this adds little sparkle to the community.

## Feedback

Thank you to everyone who managed to complete their feedback form. (distributed with last newsletter) It was a slightly disappointing response considering the number of residents who have a lot to say but clearly are not happy to express their views on a feedback form.

Thank you to those who participated.

## Contacts

**Hanham Hall Website** - <http://hanhamhall.uk>

**HHRG** - [hanhamhallresidentsgroup@gmail.com](mailto:hanhamhallresidentsgroup@gmail.com)

**Newsletter** - [hanhamhallnewsletter@gmail.com](mailto:hanhamhallnewsletter@gmail.com)

**Pinnacle** - [www.pinnaclepm.co.uk](http://www.pinnaclepm.co.uk)

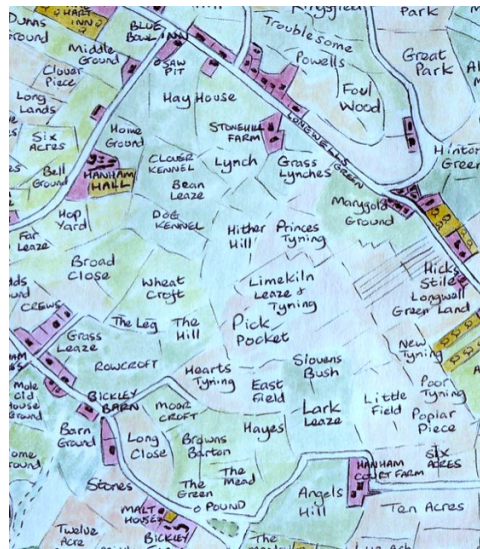
Or [robyn@pinnaclepm.co.uk](mailto:robyn@pinnaclepm.co.uk)

## Calendar of Meetings, Group & Events

DECEMBER 20	JANUARY 21	FEBRUARY 21
HHRG Meeting Tues 1st @ 7pm	HHRG Meeting Wed 6th @ 7pm	HHRG Meeting AGM Tues 2nd @ 7pm
Father Christmas 6th - 1.00 till 3.00pm + Winter Wonderland	Photography Competition Dates to be confirmed	
Book Club Monday 14th via Zoom	Book Club Monday 11th via Zoom	Book Club Monday 8th via Zoom

## Hanham Hall Environment Group Autumn 2020

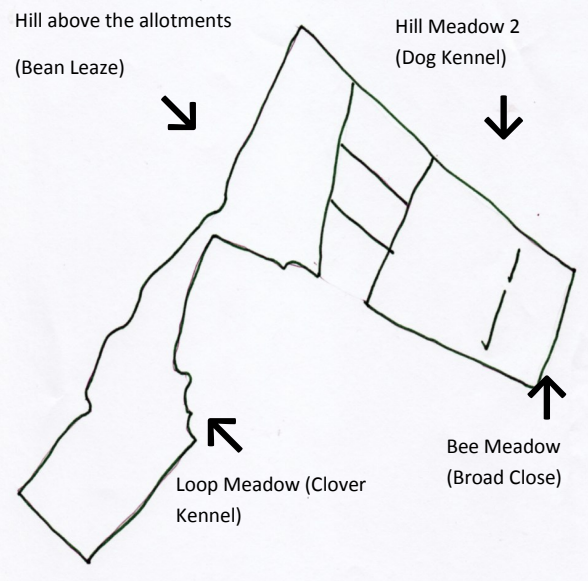
Autumn is a time of great beauty but also one of great activity, so as the trees around our estate drift into the browns and golds that herald the approaching winter and our hedgehogs, foxes and squirrels collect the food that will take them into next year, we also have work to do preparing our estate for next spring. An updated management plan for our meadows has been approved by the CIC and many of the recommendations are being brought into play. The meadows have been cut as they have been every autumn but this year we have become part of the local rural economy as we have struck a deal with a local farmer who has cut our meadows for hay which he can then sell but he cuts the meadow free of charge which saves the community just under £1,000. A good deal that means our hay is being recycled as feed and bedding and for a brief week our meadows were transformed into that timeless rural landscape of autumn fields with hay bales, a site that many of you have commented on. Cutting the meadows for hay is a longer process than just removing it as we have done previously. The vegetation is first cut and left to dry in the sun and a few days later it is then turned to ensure the drying is complete. The dry hay is then formed into rows so that the baler can pick it up easily and once it is baled it is left until it can be collected. So the farmer has to return to our meadows five times in order to harvest the hay. A process that took almost two weeks but fortunately the weather held and the harvest was successful. As part of the new management plans we have left areas of the meadows uncut so that they can act as refuges in which local wildlife can overwinter. Most of the butterflies that are common in our meadows overwinter as caterpillars



on their food plants so leaving areas of uncut vegetation ensures that these can survive the winter and emerge as butterflies the following spring. Each year a different area will be left uncut to ensure that the short sward of the meadow is maintained. Researching the history of Hanham Hall I came across a map from 1843 that named all the fields in the area. These had a wonderfully nostalgic ring, names such as Broad Close and Bean Leaze. So on the new management plan I have named the meadows as they were back in the 1800's in order to add a sense of history to our land. So our four meadows are now known as Clover Kennel, Bean Leaze, Dog Kennel and Board Close (see maps). Loop meadow (Clover Kennel) Hill above the allotments (Bean Leaze) Hill meadow 2 (Dog Kennel) Bee meadow (Broad Close)

Following the success of last

years tree planting we have accepted an offer from South Gloucester council of another 100 trees that will be planted on the hill above the allotments. This will augment the existing plantings and will convert the meadow above the path into woodland (in a few years time). These should arrive in early December so please prepare for a day planting trees with lunch provided by the HHRG. Barrett's have given the CIC a sum of money to replace trees that they planted but which have since died. These have been ordered and were going to arrive in November but may now not arrive until after lockdown. These will be larger trees so there will be much digging required over a couple of days when they arrive. As part of the new management plan the small woodland that connects Roman Way with Reade Close will be planted with a range of woodland plants and ferns. The lawn area at the Roman Way end will remain but the remaining area will become a woodland glade with bluebells, wood anemones and snowdrops. I will be calling for help with this planting from younger members of our community. I hope everyone continues to enjoy the meadows over the winter and we look forward to a bright and colourful spring. Peter Smithers



## Recipe - Sausage Rolls (from Delia Smith)

### Quick Flaky Pastry:

175g butter or block margarine

225g plain flour

Pinch of salt

Cold water to mix



Make this quick flaky pastry (it's easy) or you could buy puff pastry (400g).

Wrap the butter in silver foil and put it in the freezer for at least 45 mins (it does no harm to leave it longer).

Put flour and salt in a bowl and when the butter is ready, coarsely grate the butter into the flour. Keep dipping the butter in the flour to stop it clogging up the grater. Then with a palette knife thoroughly mix so that the butter is evenly distributed and covered in flour. Then add cold water a little at a time, mixing with the knife. When it starts to bind, use your hands to finish. Wrap in cling film and allow to rest in the fridge for 30 mins.

450g pork sausagemeat

1 medium onion

4 tablespoons chopped sage leaves

1 egg, beaten, to glaze

Meanwhile mix sausagemeat, onion, sage together in a mixing bowl. Roll out the pastry on a floured surface to form an oblong approx. 42 x 30cm. Cut this into 3 strips lengthways. Divide the sausagemeat into three and create 3 long rolls in the centre of the 3 pastry strips.

Brush one side of each strip with beaten egg and then fold the pastry over and seal it onto the eggy side. Turn it so the sealed edge is underneath and press lightly. Cut into individual rolls and place on a greased baking sheet. Using scissors snip V shapes along the top of the rolls and brush with beaten egg.

Cook in preheated oven at 200 degrees centigrade for 20-25 mins. Once cooled you can store in air tight tin. Or freeze and remove them as you need them. Just defrost for an hour at room temperature and then warm in a hot oven for 5 mins.

## Hanham Hall - Gardens and Green Spaces

The following is a short piece written by our gardeners, Edd and Regan, with an emphasis on the eco friendly aspect of their work at Hanham Hall.

One of our intentions at Hanham Hall is to create an accessible and nature friendly safe haven. Somewhere that, things like the "Wiggly path" inspire games and exploration. Hopefully reconnecting and rewilding the community, tempting those that prefer technology back outside and hopefully creating an interest then community care for your estate and its wildlife. Creating an understanding of nesting season and spawning seasons and how that that governs our work by law to protect nature. For example, the pond clearing can only be done when much colder and the pond life has gone into hibernation. Any cutting of the reeds during growing season will only promote more growth.

All in all we hope to bring the community together with a mutual love and understanding of the plants and nature surrounding the estate.

## Interesting facts re fungi


Hanham Hall has erupted this year with lots of fascinating fungi!

Fungus and mushrooms are incredible spreading with "spores" that can float on the wind for miles and a very clever web like root system called "mycelium". Mycelium can be easily found around rotting vegetation. If you have ever seen what looks like white mould in the soil or rotting leaves? That's mycelium! The mycelium will cover most of the estate without you seeing any of it, the only thing you will see above the surface are the mushrooms and fungi.

Having fungus at Hanham Hall shows that the ecosystem is working well. The original recyclers, mycelium and fungus, are good indicators to healthy soil types.

The following are some of the fungi identified at Hanham Hall:

**Common Funnel**



*Clitocybe nuda*

**Summary**

The Common Funnel has a light brown medium sized cap which dips in the middle forming a funnel shape. The gills are tightly packed and are attached to the cream coloured stem.

**Spore bearing surface**

The gills are closely packed and attached to the stem.

**Width**

4 - 8 cm

**Height**

3 - 6 cm

**Ring present on stem**

No

**Features**

Smells of bitter almonds

**Fruiting period**

Summary Detail Features

**Brown Hay Cap**



*Panaeolina foenicula*

**Summary**

The Brown Hay Cap has a small convex light brown cap with a darker band near the edge. The cap flattens out with age. The stem is relatively long, often with a kink in the middle.

**Spore bearing surface**

The gills are brown, well spaced out and free or attaching only at the very top of the stem.

**Width**

1 - 2 cm

**Height**

5 - 10 cm

**Ring present on stem**

No

**Fruiting period**


May to October

**Spore colour**

Summary Detail Features



**Common Puffball**



*Lycoperdon perlatum*

**Summary**

The Common Puffball has a medium sized cream-brown spore bearing sac on a short stem, it is covered in small conical spines. The sac develops a pore at the top and releases yellow spores when mature.

**Spore bearing surface**

The spores are released from the sac at the top of the stem

**Width**

2 - 5 cm

**Height**

5 - 10 cm

**Ring present on stem**

No

**Fruiting period**

September to November

**Spore colour**

Summary Detail Features

**Lurid Bolete**



*Boletus luridus*

**Summary**

The Lurid Bolete has a large domed cap that ranges from yellow to brown in colour. The stem is thick and sturdy with red veining on the surface. The underside is spongy and yellow to orange in colour.

**Spore bearing surface**

Porous and yellow to orange. Bruises blue.

**Width**

10 - 20 cm

**Height**

10 - 15 cm

**Ring present on stem**

No

**Fruiting period**

July to November

**Spore colour**

Summary Detail Features

**Christmas Competition - Prizes for up 5yrs and 5 to 10yrs, use your imagination, colouring painting etc. Post in Santa's post box by the bug house to enter.**

