

# HANHAM HALL COMMUNITY NEWSLETTER

August 2020—Issue 2



There haven't been any Newsletters for a few years, and now it seems they're like buses.... nothing for ages then two together.

There was such a good response to requests for information, articles, memories, etc., that it seemed best to split it into 2 separate issues. The first, which you've now received, was mostly information and a refresher about the Hanham Hall Eco Development, how it's managed, funded and how it works. There were several 'soundbites' of peoples' Hanham Hall memories, things they like about living here and events they've enjoyed.

This issue is mainly about the activities and groups which have been set up here, which anyone can join in with, as and when you can and if you choose to. Each section has a contact address at the end of it.

If you have any thoughts or ideas of activities or groups you'd like to see here, please make the suggestion via [hanhamhallresidentsgroup@gmail.com](mailto:hanhamhallresidentsgroup@gmail.com). This email address isn't checked daily, so please be patient. Remember it's operated by volunteers.

We've also created a Kid's Page in this issue, and hope it provides some fun for the younger members of our community.

Our plan is to produce a Newsletter quarterly as it was originally, and we'd love any ideas and contributions for the next one. Please send them to [hanhamhallresidentsgroup@gmail.com](mailto:hanhamhallresidentsgroup@gmail.com).

Any photos welcome.

Thank you to everyone who has contributed so far. Please keep the information and your comments coming. And thank you for reading this.

## HHRG:

The next Hanham Hall Residents Group meeting will be on Wednesday 5th August at 7pm. If the weather is good (and government guidelines permitting) we will have a socially distanced meeting on the formal lawn - please bring something to sit on.

If the weather looks bad we will have a Zoom meeting. Sign in details will be posted nearer the time. Details will be put on both HH Resident's Only Facebook page, HH Facebook Notice Board and the Notice Board at the end of the greenhouse wall. The agenda will be sent out via Mailchimp. If you haven't opted in to this Mailing list yet and would like to, please email:

[hanhamhallresidentsgroup@gmail.com](mailto:hanhamhallresidentsgroup@gmail.com)



hanham hall  
Community Interest Company

## GROUPS AND ACTIVITIES

**Hanham Hall Environment Group (HHEG).: Peter Smithers ([petersmithers48@gmail.com](mailto:petersmithers48@gmail.com))**

Here at Hanham Hall, we are extremely fortunate to have approximately six acres of wild flower meadows bordering the estate, collectively owned by the residents. Whilst the C.I.C. organise the annual mowing of these meadows there are many small jobs that need to be completed each year. The Environment group was formed to tackle some of these tasks but also to provide residents with an opportunity to take ownership of their meadows, take a little exercise and gain a deeper appreciation of the natural world that is on their doorstep.



The initial tasks were clearing the more invasive plants that threatened to dominate the fields. So several Dock and Thistle digging sessions were organised. Realising we needed a little help The Conservation Volunteers (TCV) were called in and together a massive number of Docks and thistles were removed. This was a very sociable experience with a BBQ lunch thrown in to keep us all going. Since then they have returned every year to help keep the docks and thistles under control.

In 2018 Emma Biggs organised the delivery of 50 trees from the Woodland trust and keen to reduce our carbon footprint the HHEG then planted them on the hill behind the log seat. The following year the Conservation Volunteers offered us more trees as they had been given a large number to plant around the Bristol area. So with help from the environment group they planted another 40 trees below the previous batch and put in a new hedge beside the orchard as the existing one appeared to be failing.

Last year the HHEG obtained another 150 trees from South Gloucester Council which were planted parallel to the cycle path to add to the trees that already lined the cycle way, increase local biodiversity and when mature to act as an additional baffle to reduce noise from the ring road.



The HHEG has also worked with Bug Life, (the Insect Conservation Trust) to plant over 100 wild flower plugs in the loop meadow, many of which are now in flower.

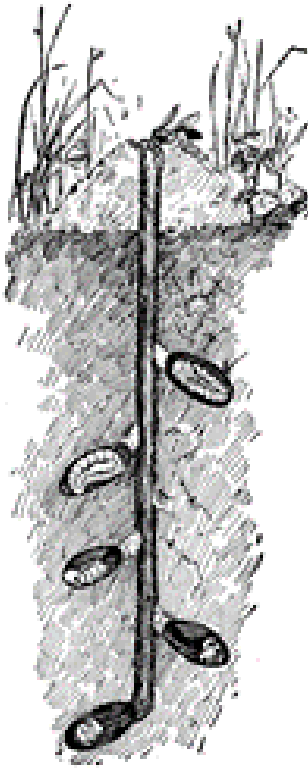
They have also, removed plastic sleeves and canes from trees in various hedgerows around the estate that were planted by Barretts, converted a pile of abandoned pallets into bug hotels ( this is an ongoing project) and have cleared nettles from the central swale.



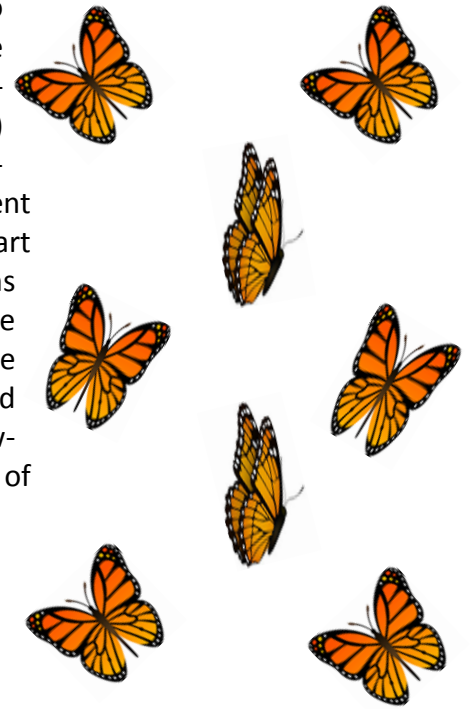


We have also used waste soil and plant material from the allotments to construct a south facing wild life bank at the foot of the loop meadow. This will be a home for mining bees and other invertebrates that like to bask on bare ground in the sunshine.

While the front face will be kept clear the top and back will become home for a range of wild flowers.



We had planned to begin monitoring the wildlife in our meadows this year (2020) but Covid 19 has halted this for the moment but we will make a start as soon as conditions allow. In the meantime I have surveyed the meadows and recorded 43 species of wild flower and 12 species of butterfly so far.



Last year we invited the Bristol Moth Group to set up their light traps in our meadow and everyone was invited to come along and see what they caught. About 40 adults and children turned out just after dusk with chairs and flasks of hot drinks to meet the nocturnal life of our meadows. As moths were caught they were passed around the audience to much OHHH-ing and AHHH-ing. On lookers remained until 11.30 and the trappers wound up at 1.00am. Over their stay they recorded 48 different moths. They are returning next year when we will put on a BBQ before the traps are turned on.

Once we can meet as group we will continue the task of removing unwanted or aggressive plants, tidying the hedges, mowing circles around the trees we have planted, maintaining the bug hotels and monitoring the wild life that we have on our doorstep.

If you fancy getting acquainted with your local wildlife, taking a little exercise and being sociable you are very welcome to join us. Keep an eye on the HHRG Facebook Notice Board for details.



## Planters: Jules Burnett

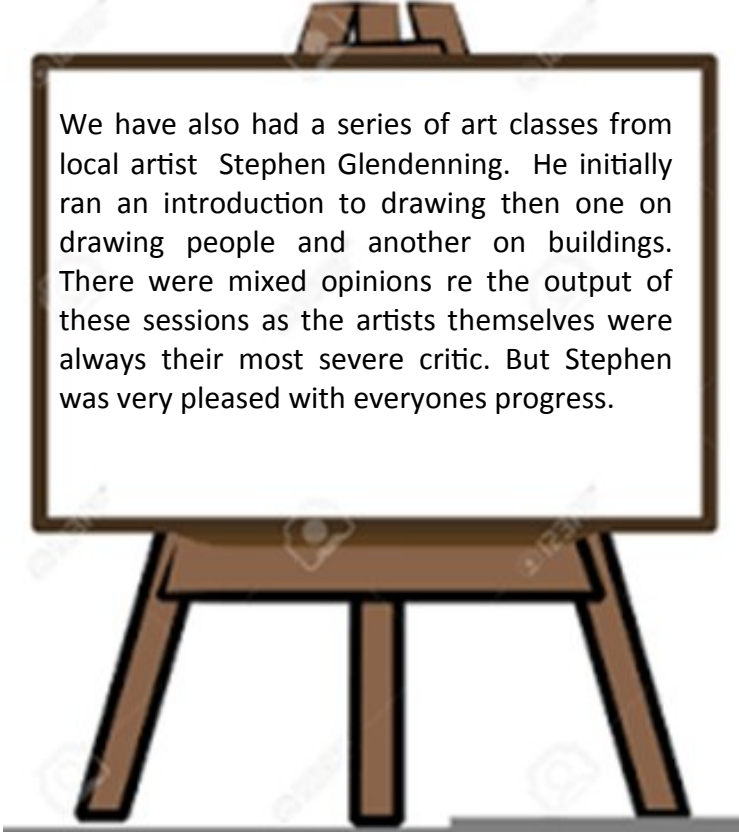
This has been a great year so far for the Planters. Plenty of time to grow from seed and propagate so I've filled them to the max for the minimum. My emphasis has been on the naturalistic with plenty for the pollinators. The bright and cheery approach has been appreciated during Lockdown and my plea for help watering was taken up, for which I am so grateful.

I was given a share of an allotment for the purpose of bringing on plants. Partly successful but a struggle when the water ran out. I was grateful for the gift of topsoil that came my way as I was able to top the beds up. My experimental "Meadow in a box" has flourished and will provide a harvest of seed for the meadows.

The Planters may be a bit on their last legs but I feel they have proved how much we need colour and cheerful planting on the estate.



## Art Classes - Peter Smithers



We have also had a series of art classes from local artist Stephen Glendenning. He initially ran an introduction to drawing then one on drawing people and another on buildings. There were mixed opinions re the output of these sessions as the artists themselves were always their most severe critic. But Stephen was very pleased with everyone's progress.



## Evening Talks - Peter Smithers

3 years ago we had a series of evening talks in the Community Room, which were very popular. Topics were diverse, ranging from Bristol Bee Lines (a project to plant wild flowers across the Bristol region), Wildlife Gardening (from the gardening correspondent for The Telegraph), Predicting the Weather (from our own resident meteorologist), The History of the Hanham area, Life as an Auctioneer, and The Wildlife of Borneo

We have had offers of future topics which include, The life in your compost heap, The Books that artists make, Diving in the Red Sea and The links between Science and Art.

## Bookbinding

Stephen also ran a day long session on book binding over which the participants chose from a vast selection of exotic paper, bindings for the spine and assorted graphics to enhance their book. Under Stephen's guidance these came together to make a small notebook, which each person proudly took away. Stephen is willing to return and run more of these sessions if we wish.



## Yoga



Our little yoga group has been running for nearly 3 years now and is currently at full capacity, although numbers could potentially be increased post pandemic. We practice Authentic Indian Gitananda yoga, with a focus on breath, movement and wellbeing.

Classes run every [Thursday 7-8pm](#) in the Hall and are exclusive to residents. We regularly practice outside on the formal gardens if the weather allows.

Emily Crowshaw, via Facebook HH Residents Only



## Cycling Group

The Hanham Hall Cycling Group organizes monthly family-friendly bike rides, taking advantage of the extensive network of traffic-free cycle paths in this area. Most of our rides start at 10.00 a.m. on the last Saturday of the month. We usually have a café stop, before returning to Hanham Hall at about 1.00 p.m. As many of the cafés we visit are adjacent to outdoor areas, you are free to bring your own drinks and snacks.

Children and young people under the age 18 must be accompanied by a parent or guardian.

Most of our rides are less than 15 miles, there and back, and we always go at the speed of the slowest member of the group. Although not compulsory we recommend that all participants wear a cycle helmet. Apart from that, please feel free to wear whatever you like, fancy dress optional!

If you'd like to join us, but you don't have a bike, we may be able to help.

If you have any particular requests or would like more information

please contact Ian Hopton :-

Tel: 0117 3320588 email: [ian\\_hopton@hotmail.com](mailto:ian_hopton@hotmail.com)





## Walking Football—Rachel Deane

We meet on the kick-about area (above Zipwire play area), with nets and our own volunteer trainer. Normally played by 5 aside with a mixture of men and women (young and old) We were coached by Nigel who gave his time and guidance free of charge. We have fond memories of Joanne playing in goal saving shots with one hand and a cigarette in the other Peter running then stopping to look at a passing butterfly, Alan doing triple somersaults when tackled Emma kicking everything and anybody in sight Rachel missing goals although she was right in front of the goal posts. Tony thought he was still playing rugby not football. When Simon A celebrated a goal he would put his shirt over his head showing off his 6 pack! and then there was Simon E. and Mark B. who put us all to shame with their passing skills. A GOOD TIME IS HAD BY ALL.



## Youth Football: Shaun Stone

Whilst being involved in creating the Hanham Hall Residents Group it seemed that the development of a community will rely on the expansion of peripheral activities, clubs and participation within them. We bought some 5-a-side nets to allow the youngsters on site to come together and play on the kick about area. These are readily available for anybody to use.

I played with the idea of setting up a club, but this was complicated by organisational and funding problems. It then occurred that we could run a youth training session if we only invested in a Coach to go forward and achieve qualification.

A Coach was sponsored by the community to achieve their FA Level 1 coaching qualifications. This involved a first aid training session, safeguarding training session and 6 x 1 hour training sessions to qualify for their coaching award. We marketed the upcoming event and started in August 2017. The formula was to be training for all 7 to 15 year olds, girls and boys on site once a week. All events were developed under our Hanham Hall site wide child safeguarding policy.

The youth football was active for a year and all the necessary paperwork is in place. We lost our Coach but would be willing to invest in anybody who would be willing to complete their Coaching qualification. The activity is currently parked and is waiting for a driver.



## Saturday Socials (Coffee Mornings)

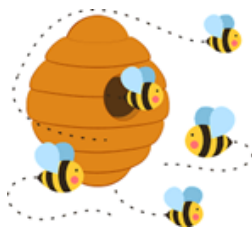
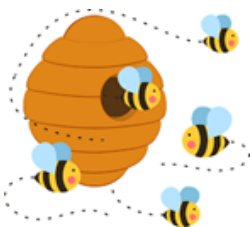
These have been held on the first Saturday of the month from 10.30 - 12.00 offering complementary coffee and cake and biscuits for residents, as a way of people getting together and meeting other residents with an option to play some board games. There were quite thriving Scrabble sessions going for a while, and the children enjoyed “Pigs in Pants”! When the café came under new management earlier this year, we experimented with moving into the café, which was a bit crowded but created a nice buzz.



## Bee Group

The Hanham Hall apiary (bee enclosure) was provided, along with equipment and bees by Barratt Homes on completion of the development. A group of 6 residents look after the bees as and when necessary, and training if required has been funded from the Community Levy. There's a lot to do in the spring and summer months, and everyone, including the bees, has a bit of a break over the winter. The bees have given us up to 60lb jars of honey in their busiest year which is sold at a good price to residents, to offset the cost of supporting these amazing and necessary pollinators.

Contact Ian Hopton email: [ian\\_hopton@hotmail.com](mailto:ian_hopton@hotmail.com)



## Informal contact list.

Here at Hanham Hall, we have always had several core events throughout the year. Although at different times, different groups of people have organised them, it has generally been the same, small core group. Over the last few months some of those people have moved on leaving an even smaller team to deal with the various aspects of putting on and clearing up after an event. I'm not going to lie, depending on the event, this can take a considerable amount of time and effort especially when numbers are so limited.

Many people have said, in passing that they wish they could take more of an active role in these events, or in the community as a whole, but many say they just don't have the time to commit and don't know how they can help. Despite this, the previous method of putting shout outs onto the facebook page rarely result in any extra help.

We have therefore thought that a possible solution could be an 'informal contact list' where people who would be willing to give up their time to help in any way can give us their details. We would keep these on record and go through them when we required help. Those on the list would be volunteers and under no obligation to help if we contacted them so there would be no pressure, but we would have a list to work through when we needed a few extra hands on deck to make the workload a little lighter for everyone.

If you would like to send your offer of help if and when it is required (and if you're able) then please send your details to:

[hanhamhallresidentsgroup@gmail.com](mailto:hanhamhallresidentsgroup@gmail.com).

Any offers will be gratefully accepted.

## Book Group

The Book Group meets the 2nd Monday of each month at 7.30pm in the Hall, but currently outdoors or via Zoom. We decide together what we'd like to read each month, and try to move around 'genres' and types of book. We order the books from Hanham Library so there is no expense to residents, then one of us collects them and can return them if people can't do so themselves. It's a very sociable group, not at all heavy, and always welcomes new readers and ideas.

Contact via Facebook Hanham Hall Book Group.

Next Book Club—10th August on the kickabout area  
Otherwise via Zoom



## Kids TV Quiz:

1. What is the name of Peppa Pig's younger brother?
2. Finish the theme tune: "Can you tell me how to get, how to get to \_\_\_\_\_?"
3. What CBBC show has been famous for giving out badges for decades?
4. Who is the missing member of the original Paw Patrol team?  
Ryder, \_\_\_\_\_, Rubble, Chase, Rocky, Zuma, Skye
5. Who is Daniel Tiger's little sister?
6. What island is Thomas & Friends set on?
7. What is the first name of Peppa Pig's elephant friend?
8. What is the name of the cockapoo in Paw Patrol?
9. What is Mr Squarepants' first name?
10. Who is Bart Simpson's dad?
11. Who is the Captain who heads up the Octonauts?
12. What is the name of Dora The Explorer's pet monkey?
13. Name all four Telletubbies
14. What is the CBBC show which retells unpleasant parts of history?
15. What is the name of Wallace's dog in the Aardman animations?
16. Who was Kermit the Frog's girlfriend?
17. Daisy and who are the twin sisters of Princess Holly in Ben and Holly's Little Kingdom?
18. Who is Peppa Pig's teacher?
19. Complete the theme tune - "Bob The Builder, can we \_\_\_ it?"
20. Where is Fireman Sam set?

Answers at bottom of page

