



# Vent-Axia MVHR Cell Maintenance

How to clean the cell in your Vent Axia Heat Recovery System

Written By: Tom

## INTRODUCTION

This guide will show you how to clean the heat exchange cell which Vent-Axia advise should be done once a year.


Remember *apart* from when you clean the heat exchange cell it should never be turned off.

### TOOLS:

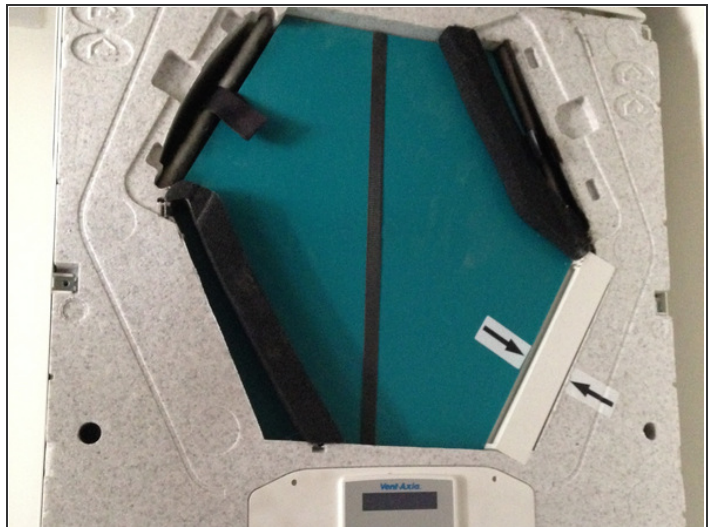
- [Phillips #00 Screwdriver](#) (1)

## Step 1 — Vent-Axia MVHR Cell Maintenance



 Turn the heat recovery system off at the wall.

## Step 2




- Remove the 6 screws from the heat recovery panel.
- You may need a friend to help you lift the panel off and hold the screws for you!

### Step 3





- Remove the internal filter on the left hand side using the pull tab
- Repeat for the external filter on the right hand side of the cell.

 If required clean them using a Hoover.

 **Do not wash in water under any circumstances**

### Step 4



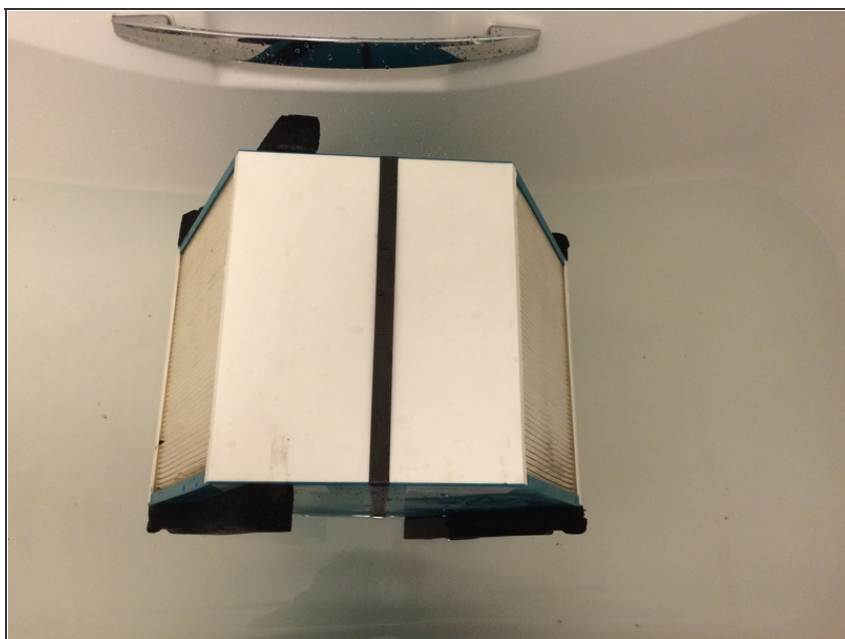
- Gently take the cell by the pull tab
  -  You may have to rock it gently to get it out.
  -  Gently and slowly is the most important step here.
- The cell will begin to slide out

## Step 5



- Clean the cell on each side with a Hoover to remove any dust

## Step 6



- Fill a bath with warm water and add a small bit of fairy liquid or similar.
- Place the cell into the water
  - Gently hold the cell
  - Rock the cell from side to side. Ensure the cell is **not** scraping the bottom
  - Lift the cell up and let the water drain out.
- ☑ Repeat for each side of the hexagon
  - Remove from the bath and leave to dry

⚠ Vent Axia technical support told me the cell can be a little damp but ensure all water is out the cell.

## Step 7

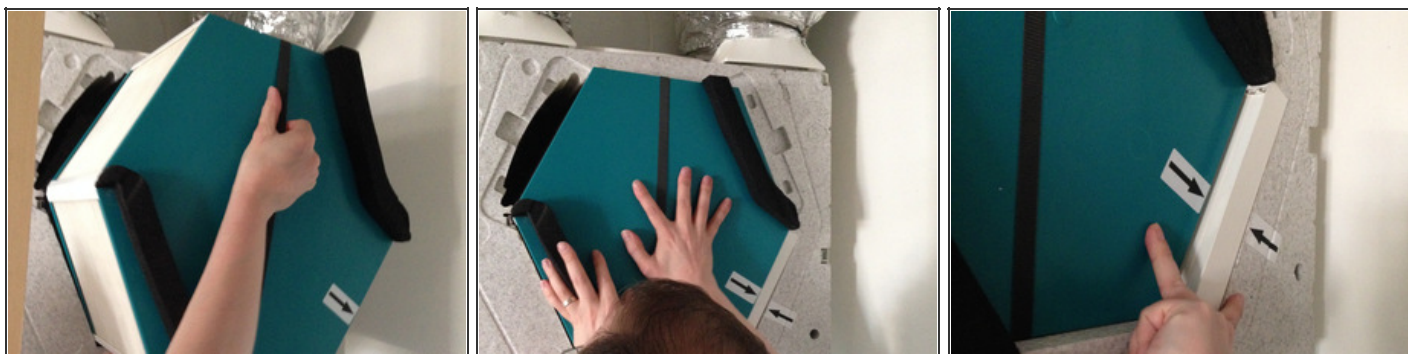


- Clean inside the heat recovery system with the Hoover
  - Remove any dead flies
  - Check the fans for any build up of dust

**⚠** If you have the summer bypass fitted (the white grill) Don't yank it, as its attached via a cable.

- Gently lift it to clean the fan behind

## Step 8



- Begin to insert the cell back in.
  - Slide using the plastic tab
  - Ensure the two black arrows meet

## Step 9



- Put the cover back on
- Insert the screws and secure the cover to the MVHR.
- Leave the internal and external filter out for now
- ☑ We will slide them through the filter flaps later.

## Step 10



- Insert the filters into each flap
- Close the flap

## Step 11



- Turn the heat recovery back on
- ✦ It will go through its initial power on so don't expect the fans to start immediately.
- ⓘ If you have a message on the screen saying **check filters** you can clear it (once the filters have been cleaned) by:
  - Waiting until *Normal airflow xx%* is displayed on the screen
  - Press and hold the **up and down arrows** for 5 seconds
  - This will reset the cycle for the filter clean. Whenever you see the check filter message clean the filter (remember this is separate to the cell).
  - Keeping your MVHR cleaned to the Vent-Axia recommendations gives you the best chance of having many years of trouble free service.

Your heat cell is now clean. Vent-Axia recommend you clean the cell once a year.

Remember to clean your filters as needed. If you want any extra information all appropriate manuals are attached to this guide.

This document was last generated on 2015-05-23 03:07:36 AM.