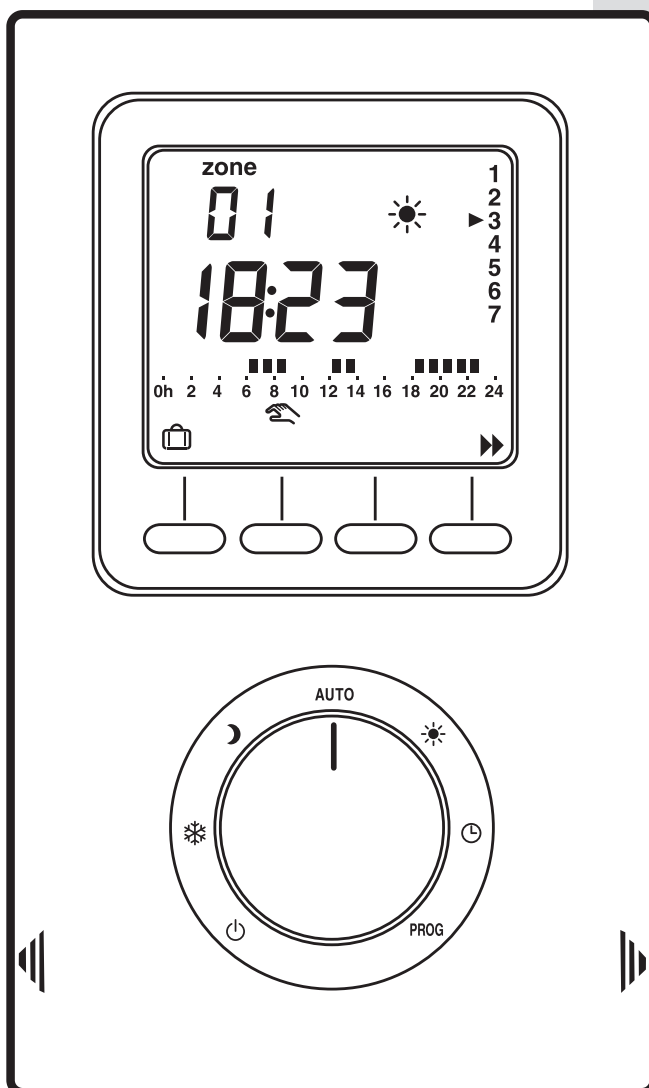




A world of expertise

# OPERATING INSTRUCTIONS MANUAL

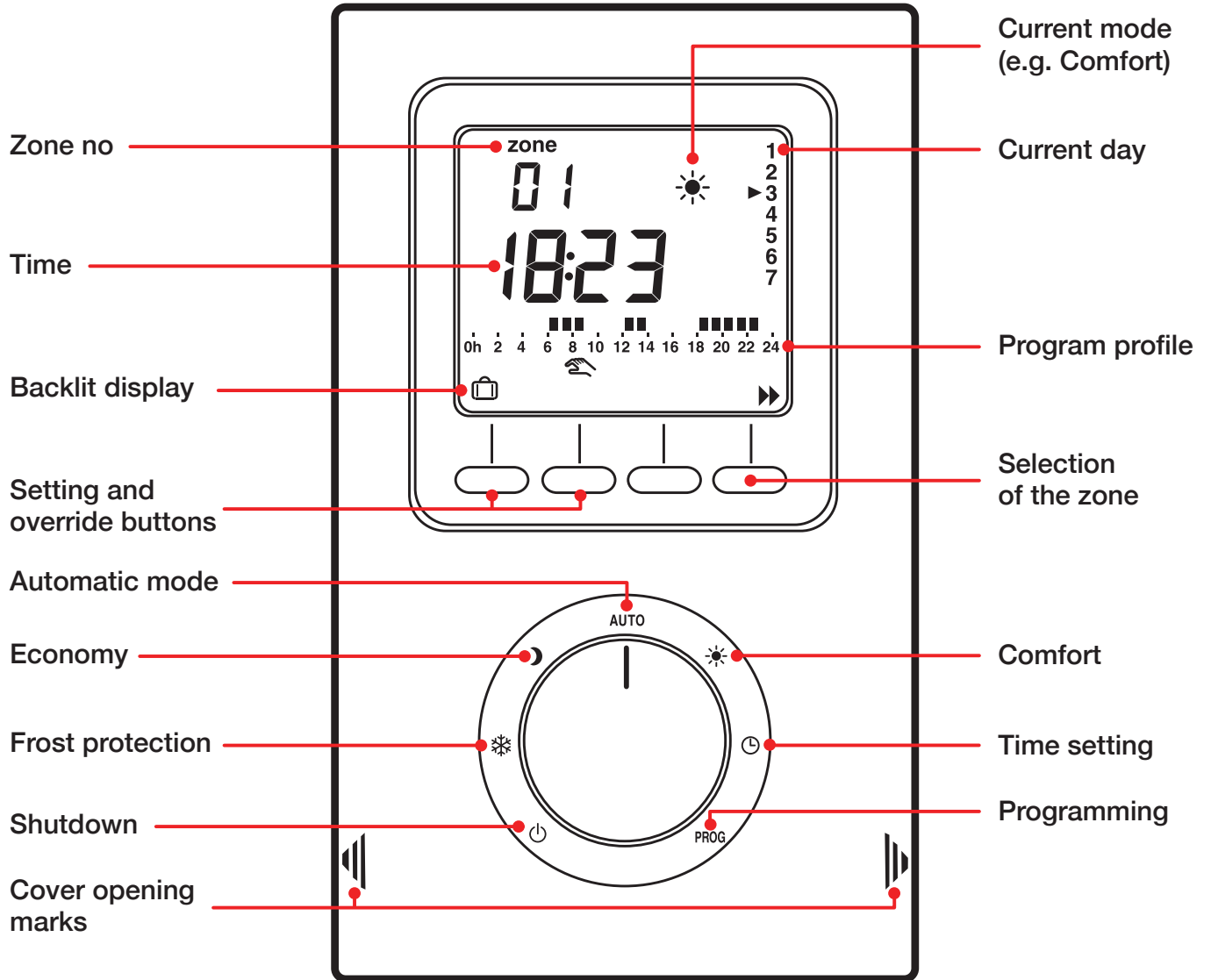


## 4-Zone Pilot Wire Programmer

Models: RXPW4N

These instructions should be read carefully and retained for future use. Note also the information presented on the appliance.

# Description



## INSTALLATION

Presentation .....	1-2
Location .....	3
Mounting .....	4
Connection .....	5-6
Starting up .....	7
Checking the pilot wire connections .....	8

## OPERATION

Time setting .....	9
Programming .....	10 -12
Automatic mode .....	13
Absence mode .....	14
Manual mode .....	15
Continuous mode .....	16
Shutdown mode .....	16
Return to the initial settings .....	17
Mains failure .....	18
Characteristics .....	19

### THESE INSTRUCTIONS SHOULD BE READ AND RETAINED FOR FUTURE USE

#### IMPORTANT SAFETY ADVICE

WARNING this product must be installed by a competent person or electrician in conjunction with the current IEE wiring Regulations and relevant Building Regulations.

DO NOT cover or obstruct the air inlet or air outlet vents

DO NOT recess the unit in to a wall, as this will cause overheating and potentially be a fire risk

DO NOT install the unit in the immediate vicinity of a bathroom or swimming pool

#### PILOT WIRE CONNECTION

##### IMPORTANT

DO NOT connect the pilot wire to earth

Care should be taken with the installation of the pilot wire(s) as when switching to background (setback) they become energised at 240V although only at a current of 1 mA. In every case a suitable means of isolation must be provided for the pilot wire and marked to indicate that two sources of supply may be present at the heater.

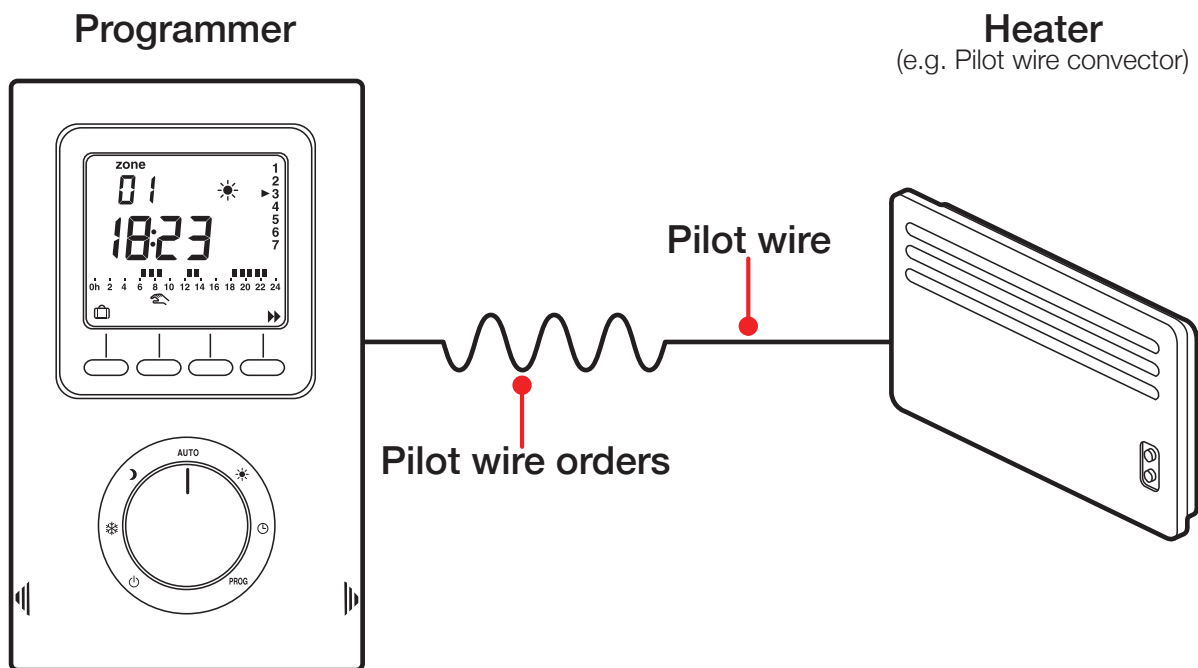
Where pilot wires are installed separately from the heater final sub-circuit they should be protected. Double insulated and carry their own integral earth continuity conductor.




**NOTE:** *Pilot wire installations are appropriate for single phase connection only.*





This device lets you set your heating to Comfort or Economy mode in four separate zones.

To control the heaters, the programmer uses a Pilot Wire. Independent from the power supply of the heat emitter, the Pilot Wire is used to send the Comfort, Economy, Frost Protection or Shutdown orders requested by the programmer.



The required temperature is set on the thermostat of each heater.

**IMPORTANT:** The heater must be in automatic mode, PROG, AUTO or  to receive orders from the programmer.

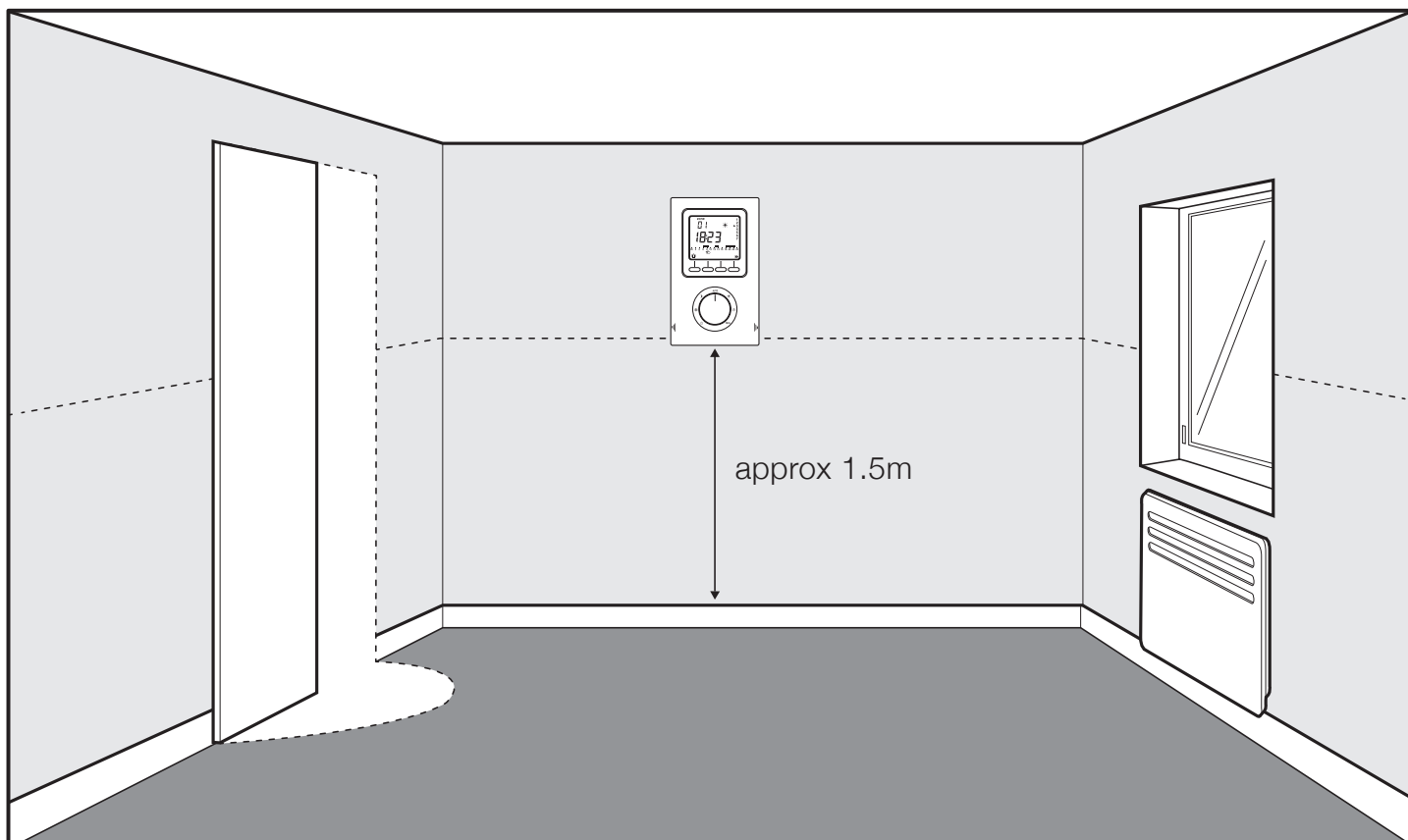
Pilot Wire Mode	Setting on the heater	Room Temperature
Comfort 	Comfort setting (thermostat control) example: 19°C	19°C
Economy 	Comfort -X°C Example -4°C (depending on heater)	Example 15°C
Absence 	Frost protection set to 7°C or 8°C (depending on model)	7°C
Shutdown 	Heating shutdown	No heating



## Location

### It is advisable to install your device:

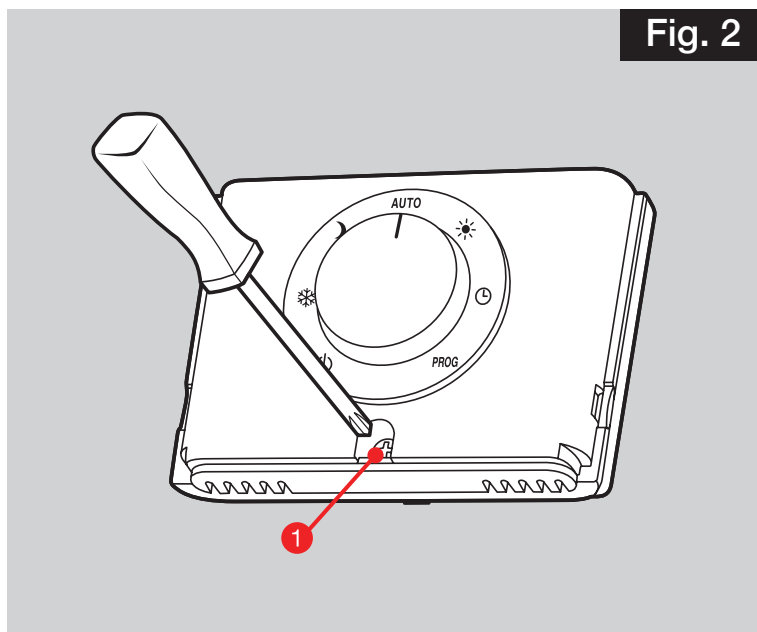
- Where there is easy access, such as a corridor, living room or entrance hall
- Close to a power supply and pilot wire entry point(s)
- On an internal wall at a height of approximately 1.5 m



## Mountains

Switch off the mains power before handling the device.

- Lift off the cover by using a screwdriver.  
- See **Fig.1**
- Space the programmer from its base by loosening the clamp screw **1** (captive screw). - See **Fig.2**



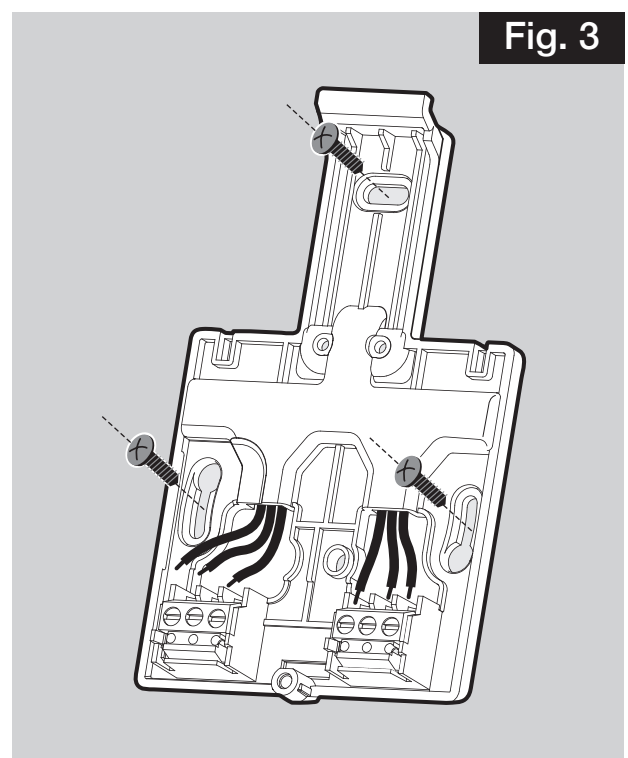
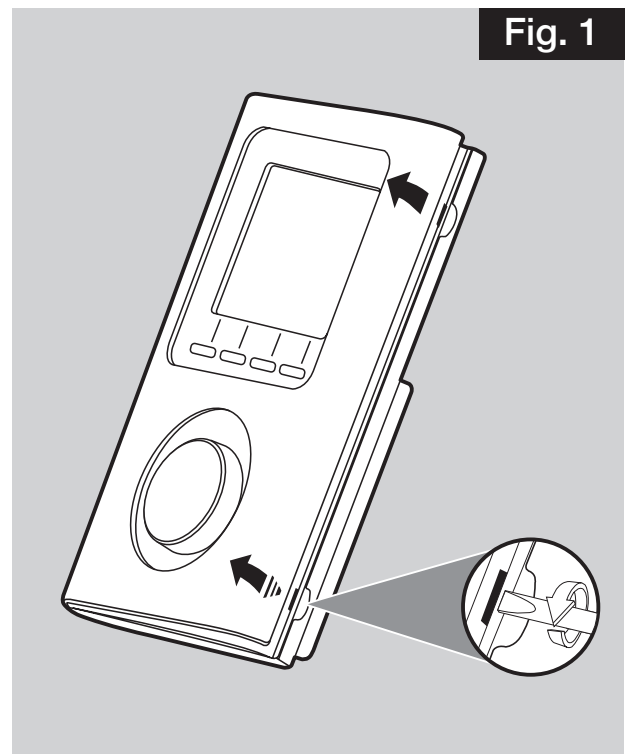
- Secure the base using three screws or fit onto a flush-mounted box (distance between centres 60mm).  
- See **Fig.3**



**NOTE:** The base must be secured using three screws.



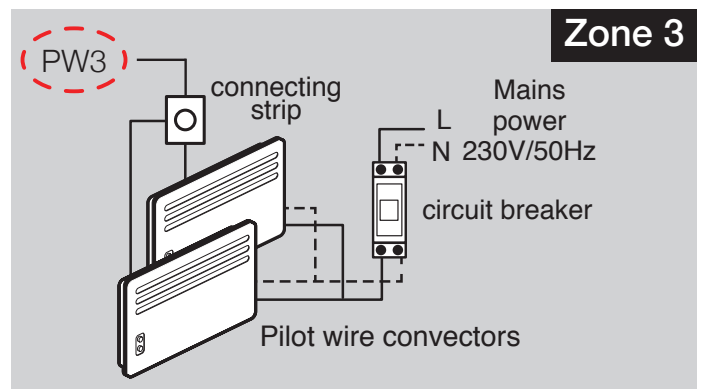
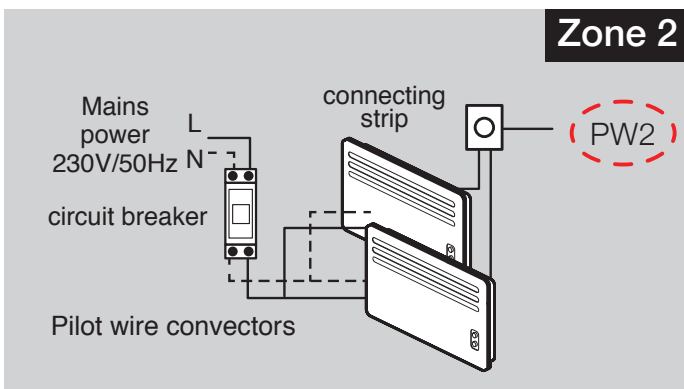
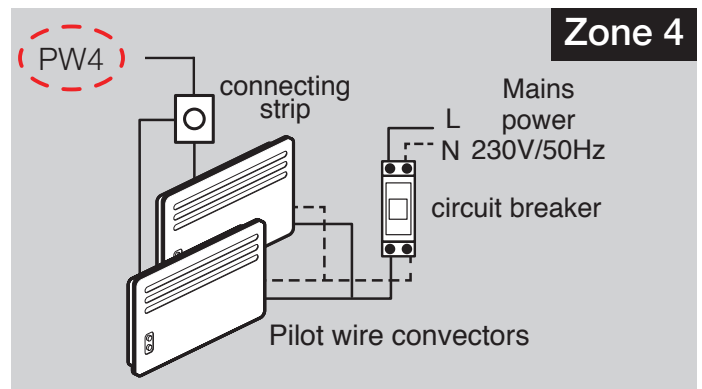
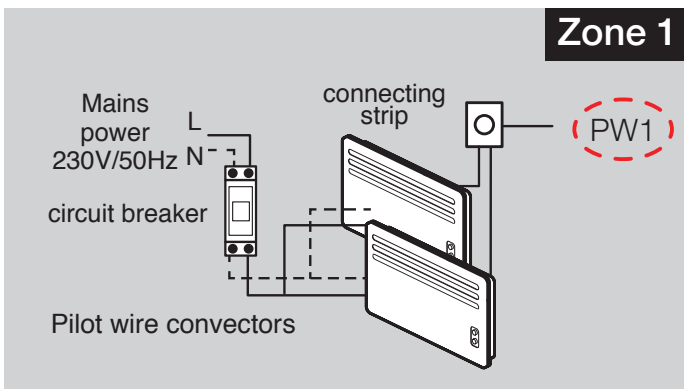
**NOTE:** To protect the power supply to the programmer, you must use a 10A circuit breaker at least (do not use a 2A circuit breaker).



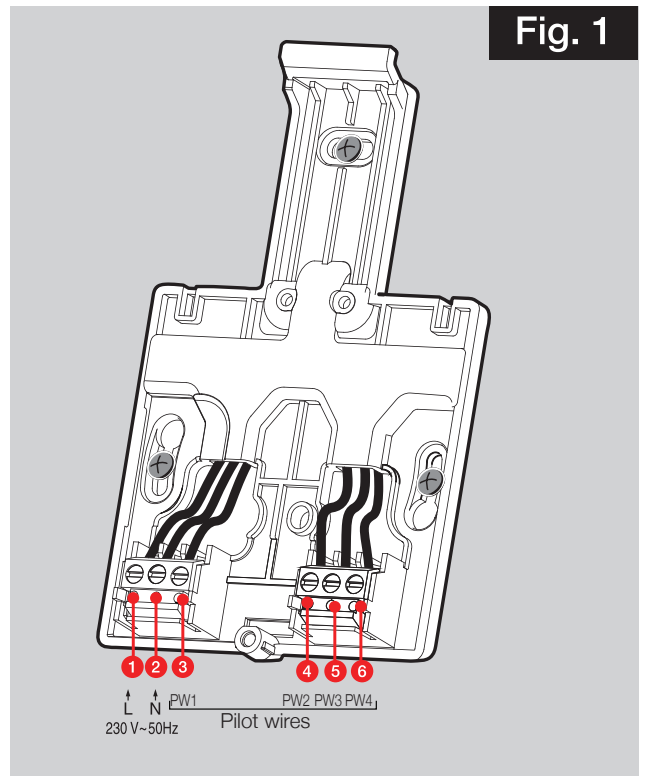


## To connect the programmer you will need:

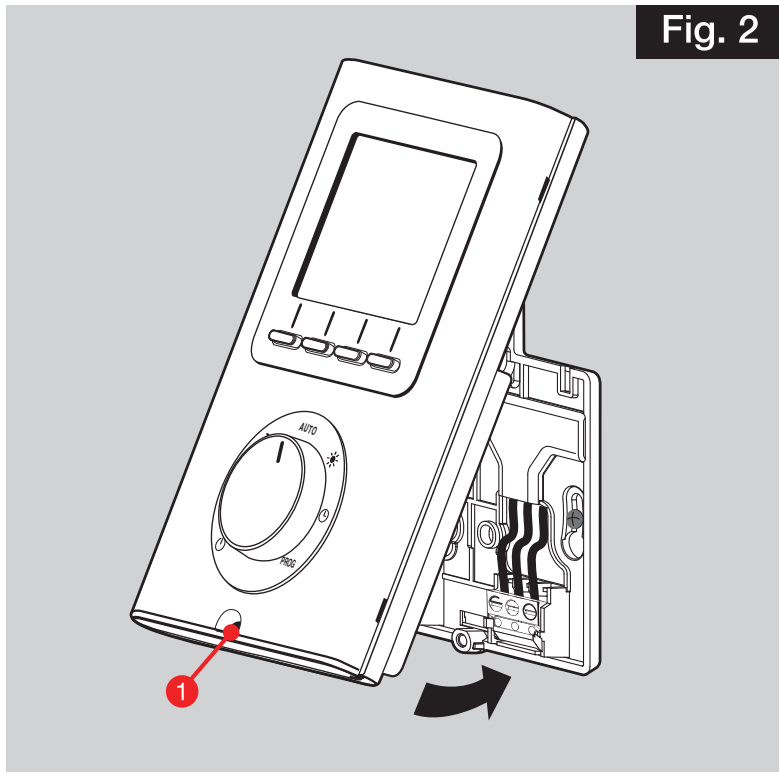
- A 230V mains power supply (live and neutral)
- Entry point(s) behind the unit for the pilot wire(s) controlling one or more heaters
- If you want to connect more than one pilot wire to the programmer, you must use a connecting strip (terminal block) so that the pilot wires are not all directly connected to the terminal
- Circuit breakers (not supplied) fitted in the electrical switchboard



- Connect the two power leads to terminals 1 and 2
- Connect the control wires:
  - PW 1 zone = terminal 3
  - PW 2 zone = terminal 4
  - PW 3 zone = terminal 5
  - PW 4 zone = terminal 6
- See **Fig.1**

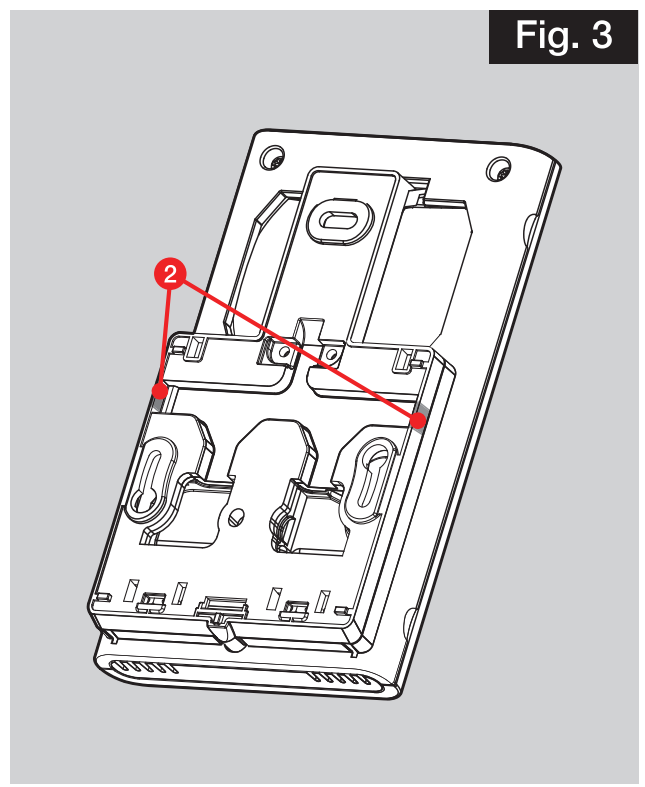


**Fig. 1**



**Fig. 2**

- Fit the programmer onto the tab of the base and secure it with the clamp screw ①
- Place the cover back on the programmer
  - The programmer is ready to be used
- See **Fig.2**



**Fig. 3**

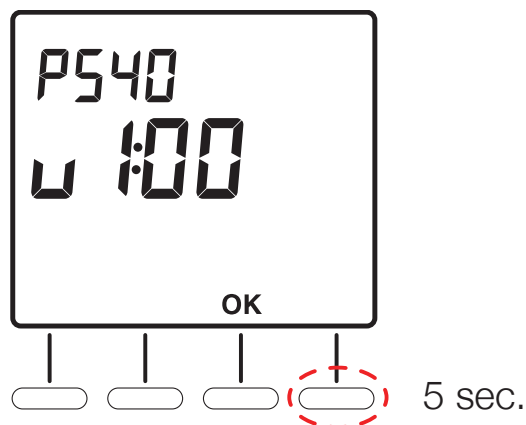
Partitions ② that can be removed by pliers are provided for passing the connection wires if required.

- See **Fig.3**

## Starting up

Turn the control dial to ↑ and press the **right-hand** button for 5 seconds until P540 is displayed (maintenance menu reserved for the installer).

Press **OK**.  
The screen displays CF01.



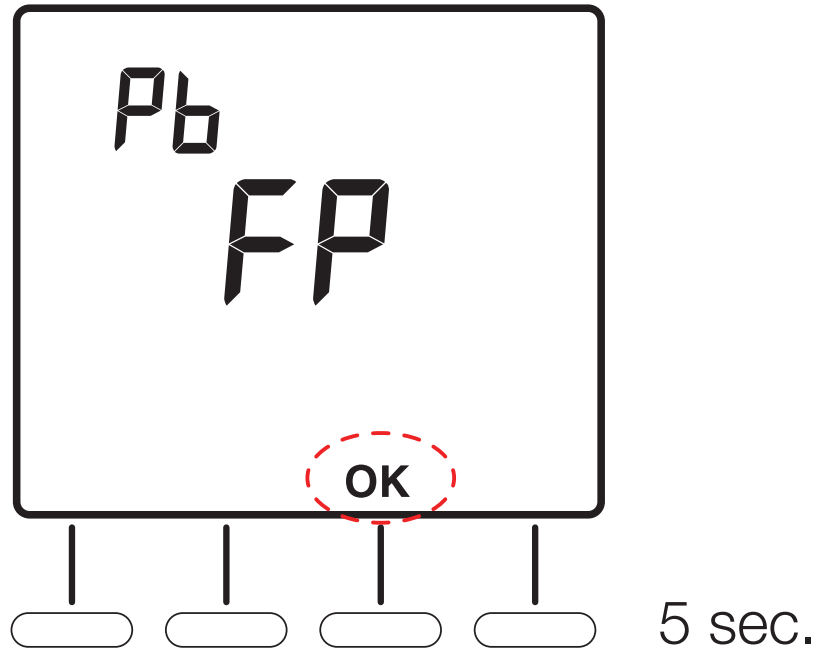
CF01 - Select **AUTO** mode operation preference from the three modes below. Press + to make your choice, **OK** to confirm it and exit the maintenance menu.



CF01 Operating mode selection	Comfort / Economy (default) Mode
	Comfort / Frost protection Mode
	Comfort / Shutdown Mode

## Checking the pilot wire connections

When the unit is first switched on, place all the heaters in Comfort mode (with the thermostat on its maximum setting). If the display remains “normal”, this means that no problem has been detected. If the programmer detects a problem, it displays:



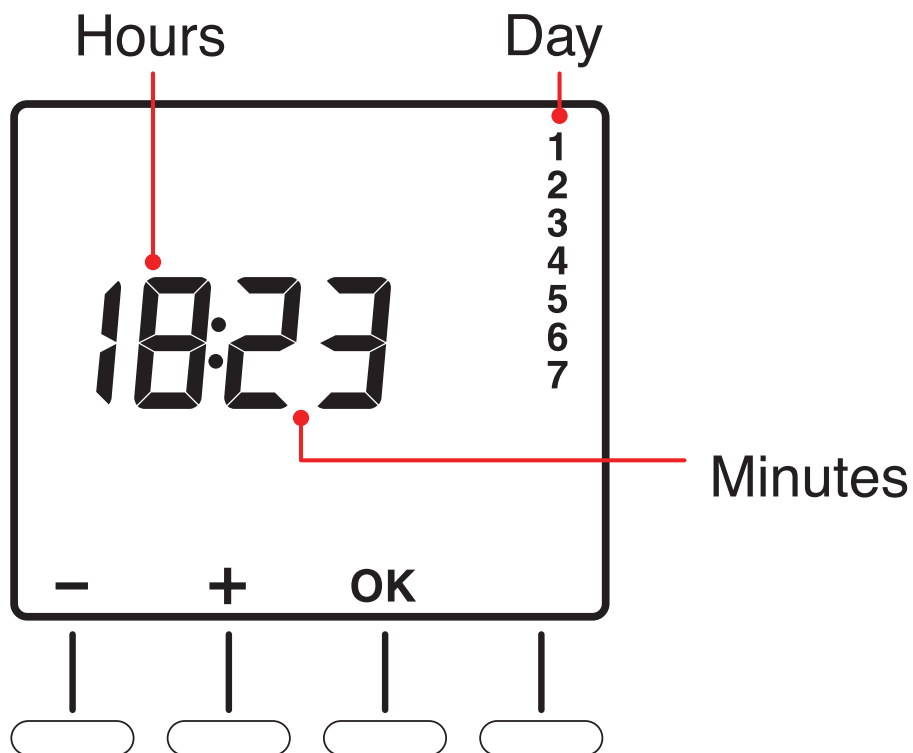
Check the connection of the pilot wires to the heaters and resolve any connection problems. When the check has been carried out, test the pilot wire again by pressing OK for 5 seconds (time taken for the test to complete: approx. (1 minute 30 sec)).

## Time setting

Turn the control dial to ⌚.

The days flash.

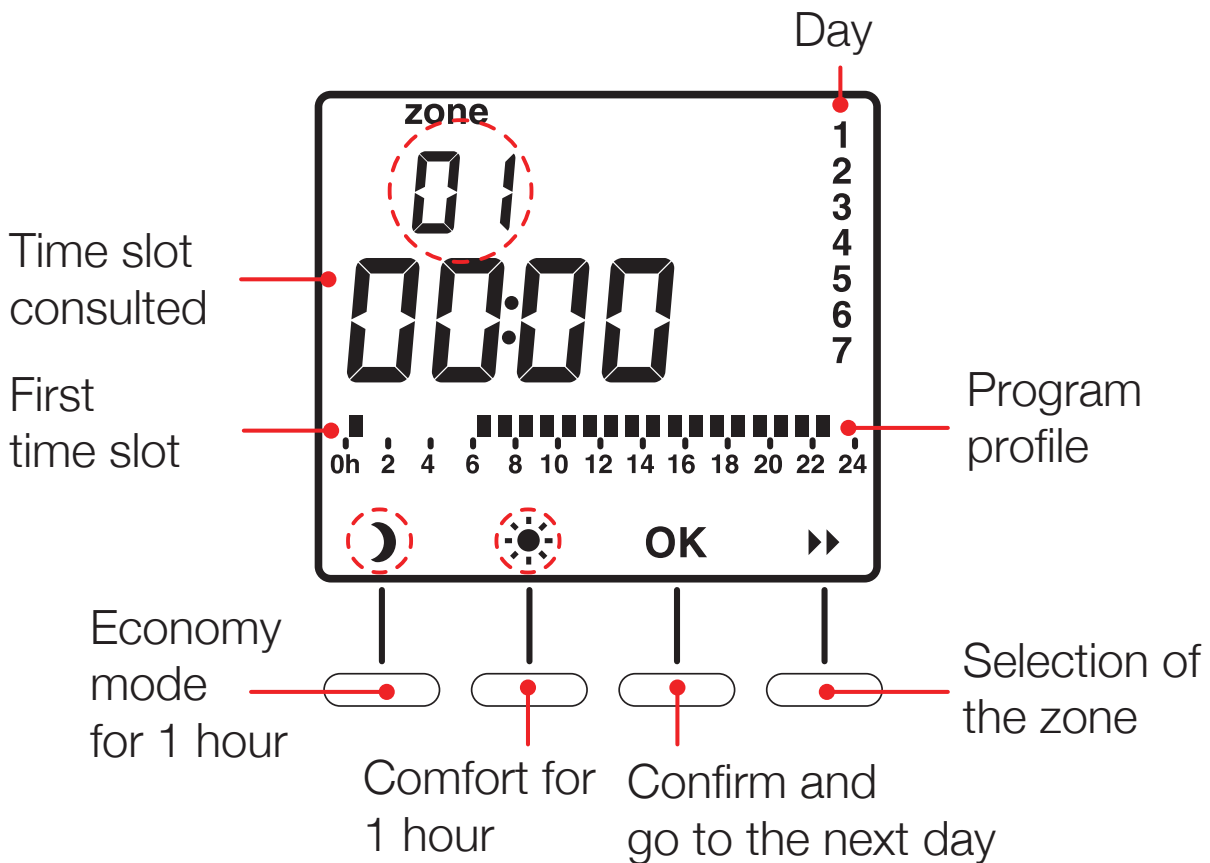
Press **+** or **-** to make your choice, **OK** to confirm and go to the next setting.



Repeat the operation to set the hours and minutes. Turn the control dial to exit the setting mode.

## Programming

When starting up, Comfort mode is active from 6am to 11pm across all days of the week and all zones. Turn the control dial to **PROG** to change the programming. The first time slot of zone 1 flashes.



### 1. SELECT THE ► ZONE TO PROGRAM

Press the button.

### 2. CREATE YOUR PROGRAM

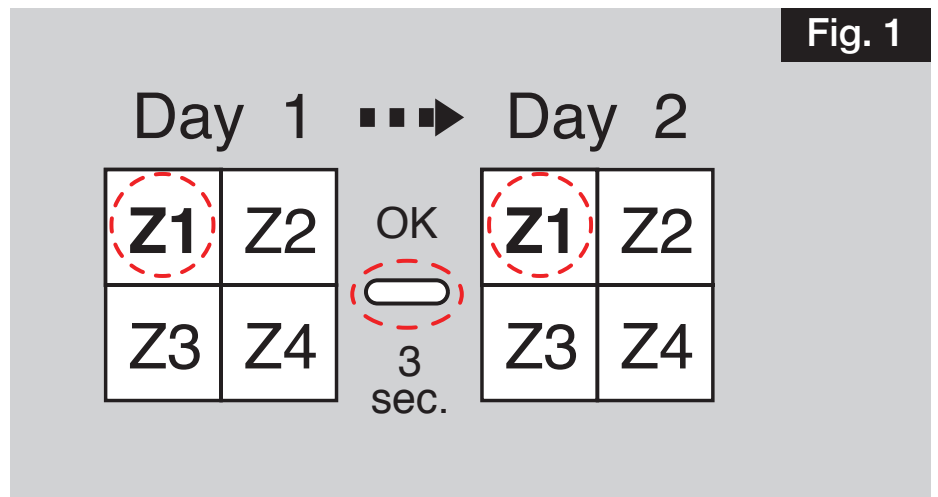
Programming starts on day 1 at midnight. Press buttons  or  to set your Comfort or Economy periods.

### 3. CONFIRM THE PROGRAM

Press the **OK** button to confirm and continue on to the next day to program it separately. Turn the control dial to **exit** the programming mode.

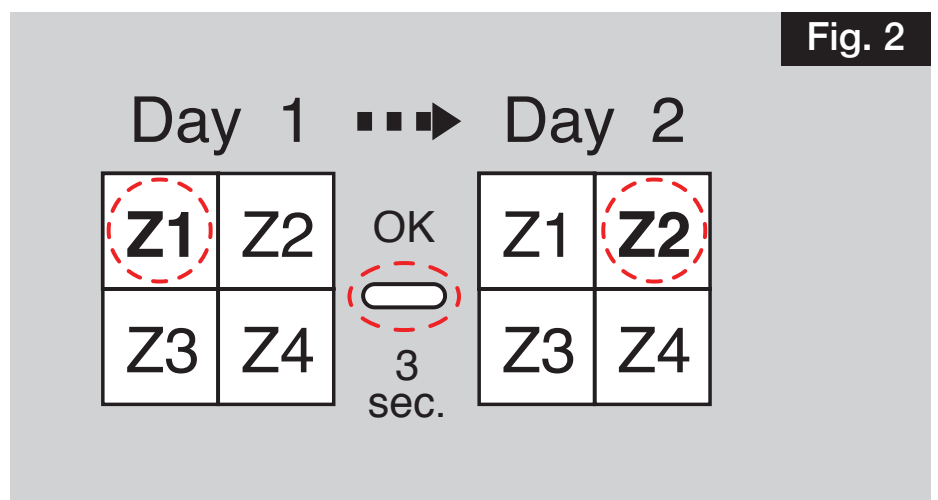
### 4. CONFIRM AND COPY THE PROGRAM

On the same zone  
for the next day  
- See **Fig.1**

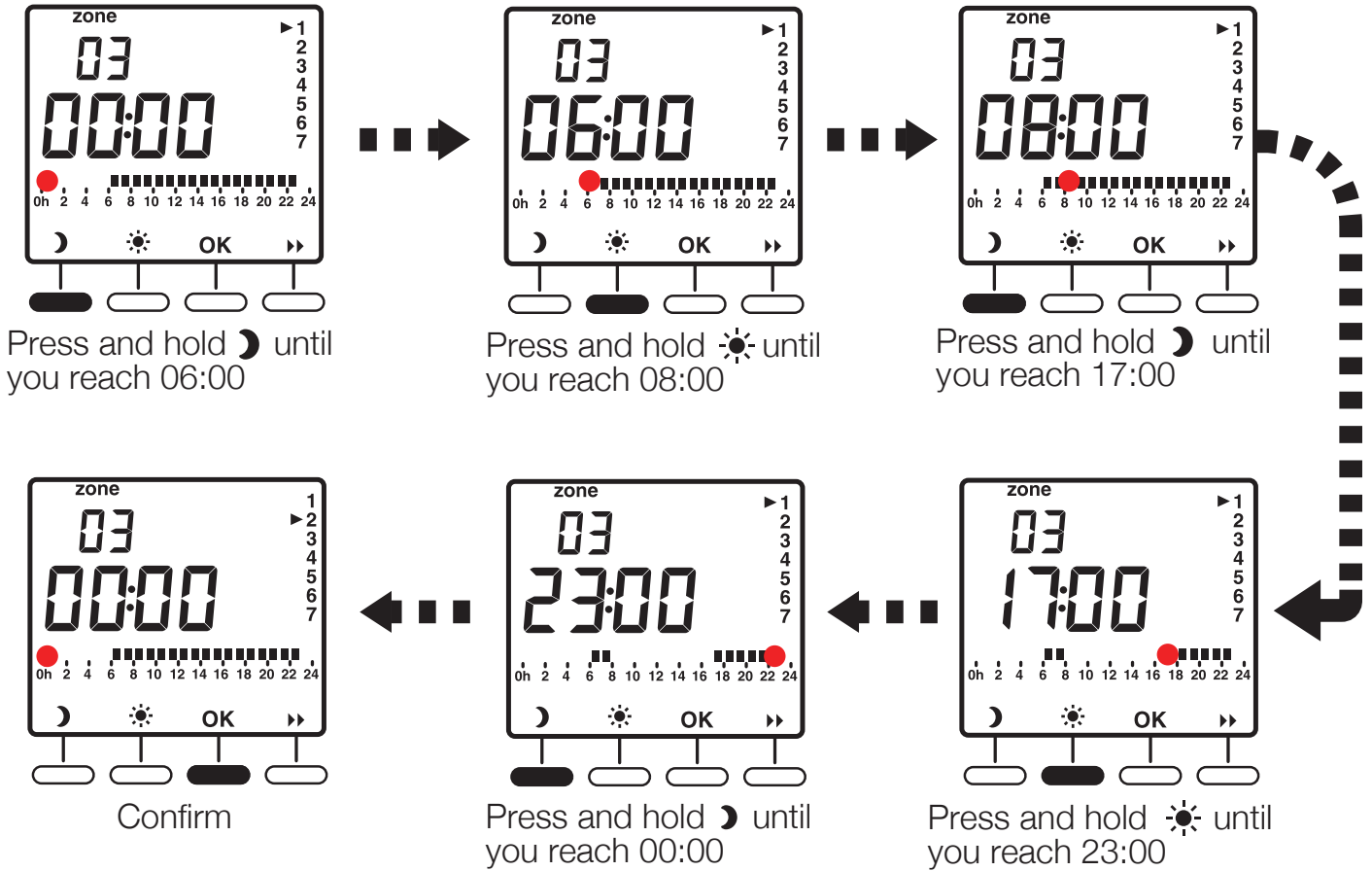


OR

On the next zone  
for the same day  
- See **Fig.2**



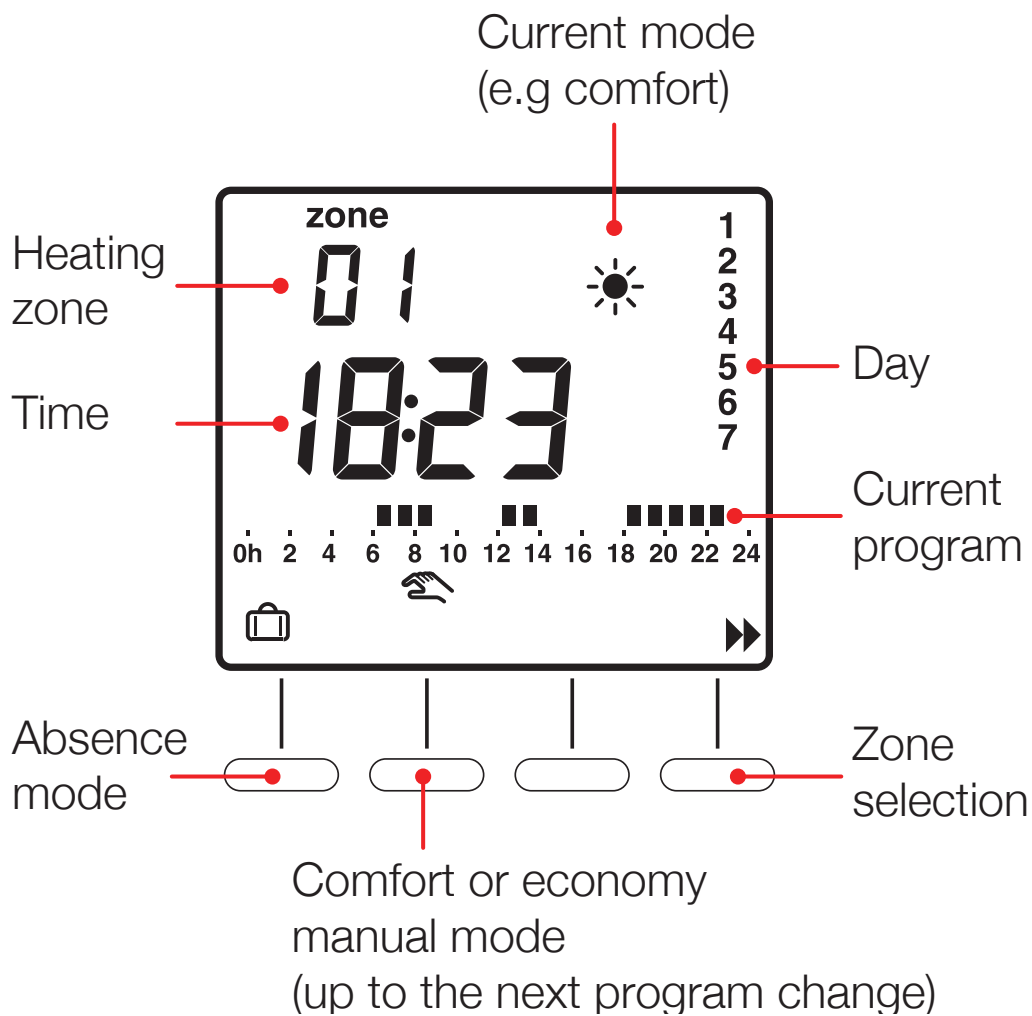
**Example:** Comfort from 6:00 to 8:00 and from 17:00 to 23:00 in zone 3  
 Press the ►► button to change the zone.





## Automatic Mode


Turn the control dial to **AUTO**.



*In Auto mode the device follows the program set.  
Press the ►► button to select the zone to consult.*

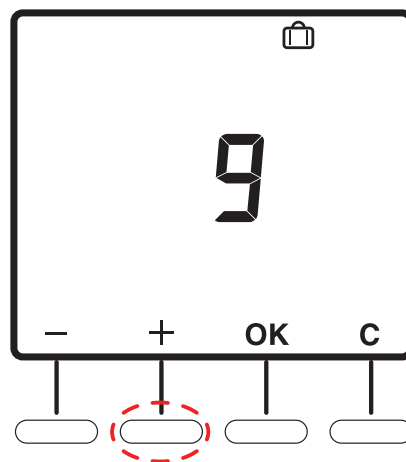
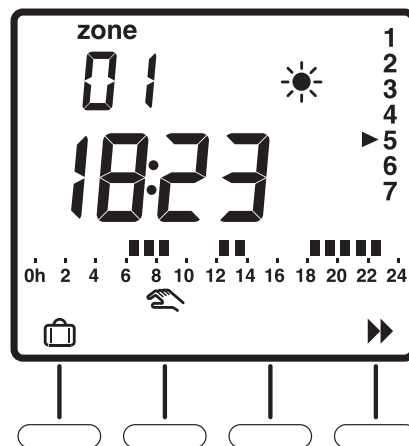
## Absence mode

This mode is used to set all the heating zones to Frost Protection mode for an adjustable period of 1 to 365 days.

From the automatic mode (AUTO), press the  button. The number of days flash on and off.

Press **+** or **-** to set the number of days.

Press **OK** to confirm.

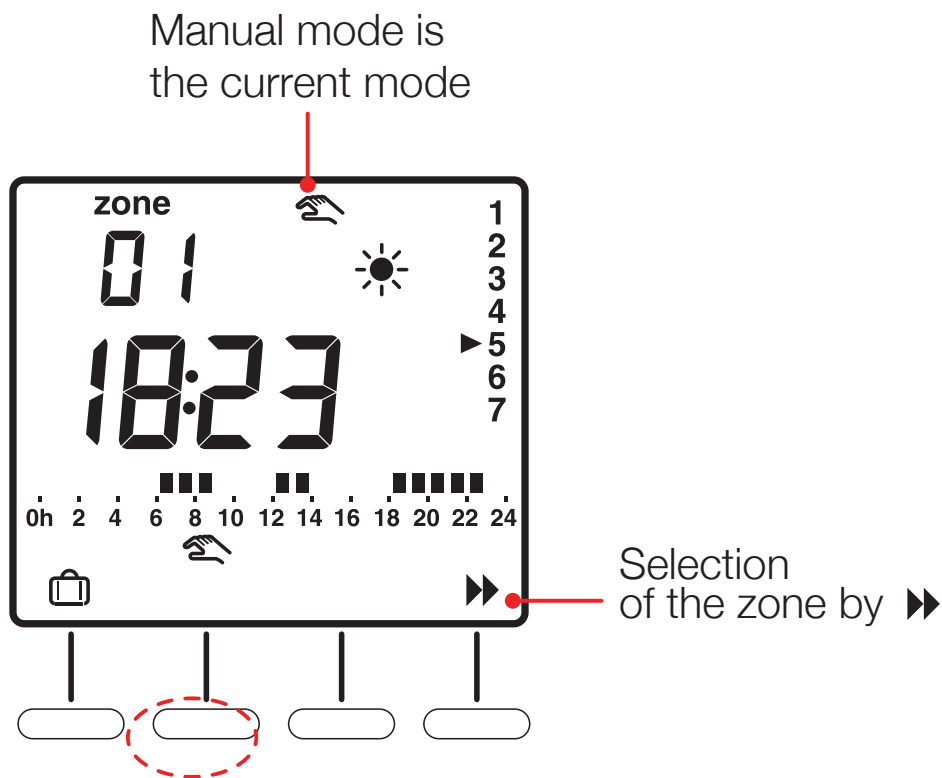


### Example:

Leaving on 10 January, returning on 19 January, indicate 9 days. Automatic operation will restart on 19 January at 00.00 h. Press OK to confirm. To cancel the absence mode (e.g. when returning early), press the C button or turn the control dial.

## Manual Mode

This mode is used to go from Comfort to Economy mode (depending on the setting in menu CF01) or conversely until the next program change for the zone.



Press the ▶▶ button to select the zone and press the 🖐 button.

### Example:

When in Economy mode, pressing the 🖐 button allows you to go to Comfort mode. To cancel the Manual mode, press the 🖐 button again or turn the control dial.

## Continuous mode

To set the heating to Frost Protection mode for an indefinite duration.

Turn the control dial to ❄️



To set the heating to Comfort mode for an indefinite duration.

Turn the control dial to ☀️



To set the heating to Economy mode for an indefinite duration.

Turn the control dial to 🌙



## Shutdown mode

To shut down the heating (in summer, for example).


Turn the control dial to 🔌



## Return to the initial settings

You can carry out a general reset to return to the factory settings:

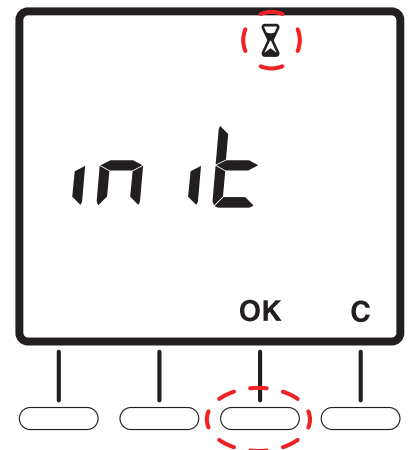
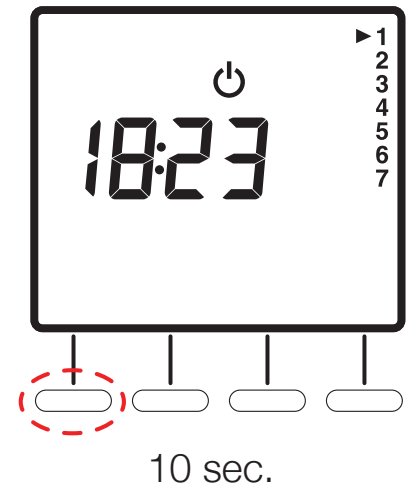
- Return to the default program.

Turn the control dial to   
then press the **left-hand button** for  
5 seconds until **in it** is displayed.

To cancel the reset, **press C**.

Press **OK** to confirm, an hourglass is displayed during the time needed for the reset operation (approx. 15 seconds).

Return to the shutdown mode display.



## Mains failure

This product has a battery back-up, however you may still need to reset the time after a lengthy mains outage.

When the power is restored, the time and date will flash.

Reset the time.

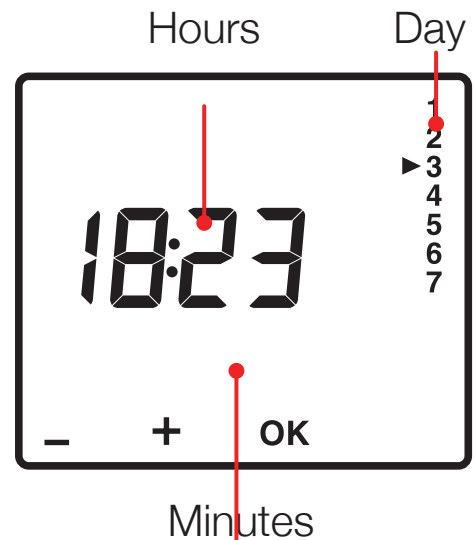
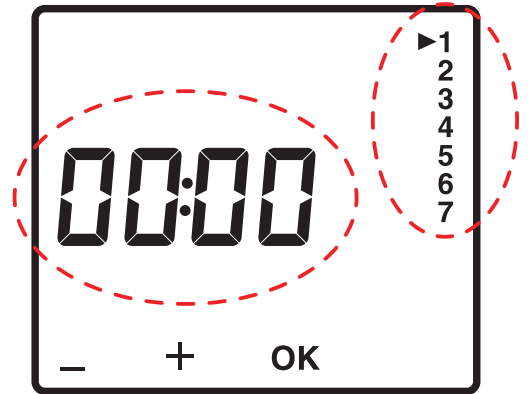
Turn the control dial to .

The days flash.

Press **+** or **-** to make your choice, **OK** to confirm it and go to the next setting.

Repeat the operations to set the hours and minutes.

Turn the control dial to exit the setting mode.



**NOTE:** *All other settings are stored and so will remain unchanged.*

## Characteristics

- 230V, 50 Hz power supply, +/- 10%
- Clock back-up in event of mains outage: 4 hours permanent back-up of the programming
- Power consumption: 2 VA
- Class II insulation
- Dimensions 134 x 80 x 25 mm
- In glass protection: IP 30
- Wall-mounted
- Install in an environment with normal pollution levels
- Storage temperature: -- 10°C to +70°C
- Operating temperature: 0°C to +40°C
- Four pilot wire outputs max. 40 mA, 230 V (GIFAM standard)
- Max. cable length 50m

## After Sales Service

Your product is guaranteed for two years from the date of purchase.

Within this period, we undertake to repair or exchange this product free of charge (subject to availability) providing it has been installed and operated in accordance with these instructions. Your rights under this guarantee are additional to your statutory rights, which in turn are not affected by this guarantee.

Should you require after sales service you should contact our Customer Services Help desk on 0844 879 3588. It would assist us if you can quote the model number, date of purchase, and nature of the fault at the time of your call. The Customer Services help desk will also be able to advise should you need to purchase any spares.

Please do not return a faulty product to us in the first instance as this may result in loss or damage and a delay in providing you with a satisfactory service. Check that the supply voltage is the same as that stated on the heater.

**Please retain your receipt as proof of purchase.**



**GDC UK Ltd**  
Millbrook House  
Grange Drive  
Hedge End  
Southampton  
SO30 2DF

**Customer Help Line**  
**Tel:** (0844) 879 3588  
**Fax:** (0844) 879 3582  
Republic of Ireland  
**Tel:** 01 842 4833